

## VOLUNTARY WITH DRAWAL of enrollment:

The Voluntary Withdrawal is a procedure performed to release the vacancy used by a student who will not be able to continue attending the educational center and thus, leaves the vacancy free for another student. This withdrawal is always a request made by the student's parent or guardian, it can never be requested or demanded by other members of the educational institution, much less due to pressure or harassment (expulsion or cancellation of enrollment).

## How does Voluntary Withdrawal work?

- 1** Custodial parent a Letter of Request for Voluntary Withdrawal of Enrollment addressed to the Principal of the institution.
- 2** The school has got to provide the background of each withdrawn student (transcript of each year, transcript of grades for each year, personality report).

The school cannot and should not request the signature of any Extraordinary Letter (or any blank document), neither when enrolling nor when withdrawing the enrollment.

Superintendency of Education Assistance  
Website:  
[atencionsie.supereduc.cl/membership/login](http://atencionsie.supereduc.cl/membership/login)

Ayudamineduc Assistance Website:  
[ayudamineduc.cl](http://ayudamineduc.cl)

School Admission System Website:  
[sistemadeadmisionescolar.cl](http://sistemadeadmisionescolar.cl)

Website for foreign students:  
[migrantes.mineduc.cl](http://migrantes.mineduc.cl)



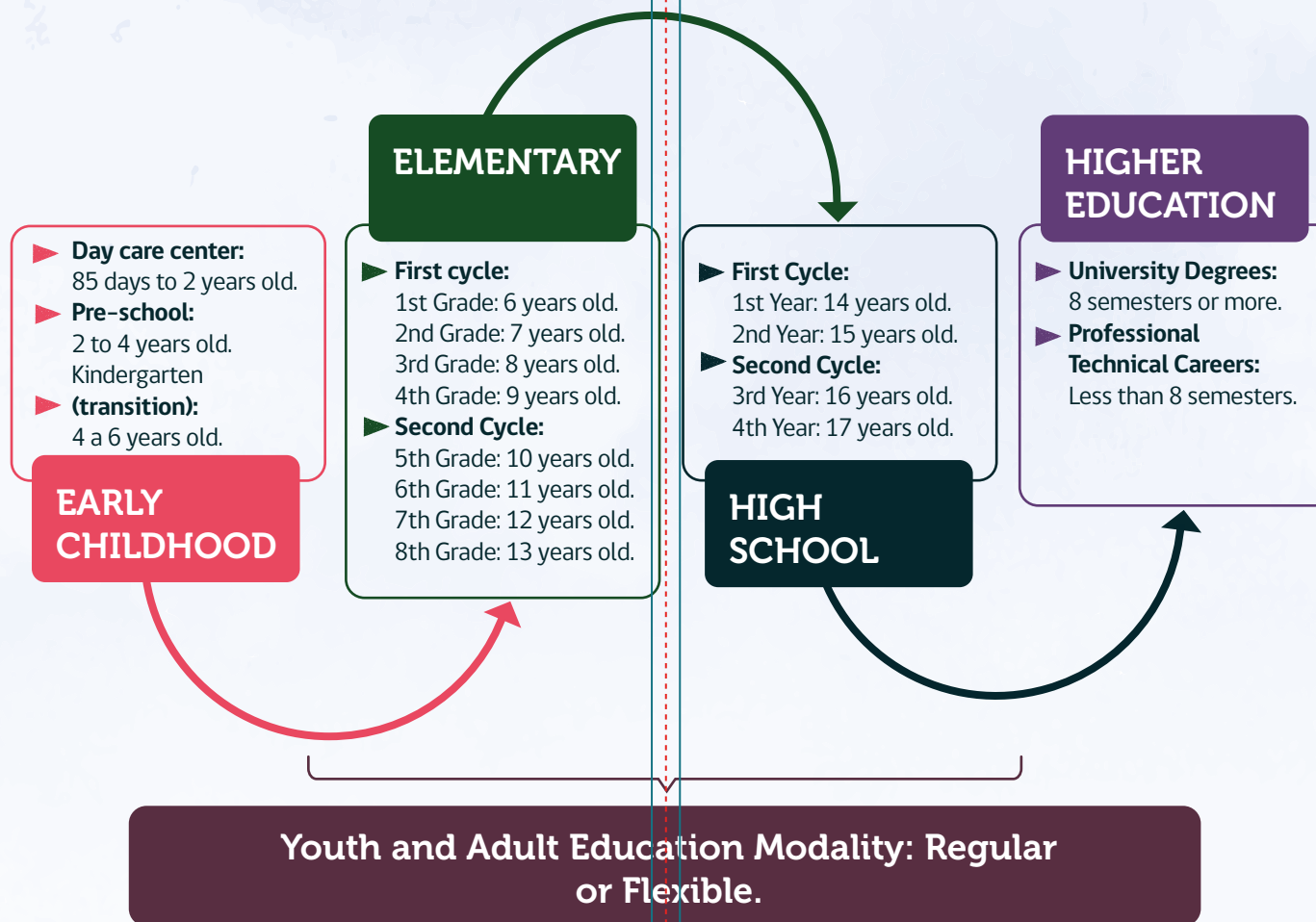
# Educational System in Chile: Voluntary Transfers and Enrollment Withdrawals for Foreign Families

For a greater and better participation of foreign families in the educational system.

Space for contact information: Seceduc, Deprovs Municipalities, schools

# Educational System in Chile

Lifetime educational trajectory and minimum age to apply  
(as of March 31 of current year).



## Legal status of each stage:

Early Childhood Education: Recommended, not mandatory.  
Elementary: Mandatory.  
High School: Mandatory.  
Higher Education: Optional.

## ENROLLMENT TRANSFER:

There are two ways to transfer a student's enrollment:

### TRANSFER

Request for transfer in the middle of the school year.

Application to a new institution through SAE.

In the first case, it is necessary to follow certain steps:

- 1** Have concrete information of an available vacancy for the corresponding grade at the school of destination.
- 2** Proceed with the Voluntary Withdrawal of Enrollment from the school of origin.
- 3** If you do not have documentation of regularized immigration status, know IPE and IPA numbers. (ayudamineduc.cl).
- 4** Go in person with all required documentation to the destination establishment, to proceed with the enrollment.

In the second case of transfer of enrollment, it is necessary to know the deadlines and procedures of the School Admission System (SAE).